



# ISDN S<sub>0</sub> Miniature SMD Interface Modules

## Features

- excellent output characteristics ensures compliance with CCITT.I.430 pulse waveform template when used with recommended IC pairing
- SMD modules are designed for pick and place compatibility
- excellent and consistent balance between windings
- manufactured in ISO-9001:2000, TS-16949:2002 and ISO-14001:2004 certified Talema facility
- meets lead free reflow level J-STD-020C
- fully RoHS compliant
- operating temperature: -40° to +85°C
- storage temperature: -40° to +125°C



## Electrical Specifications @ 25°C

Turns Ratio: **Bold** = IC side windings

Miniature Chip SMD Modules comply with EN60950, UL1950 and UL1459

Part Number	L <sub>P</sub> (mH Min)	Turns Ratio	L <sub>L</sub> (μH Max)	C <sub>C</sub> (pF Max)	R <sub>CU</sub> P (Ohms)	R <sub>CU</sub> S (Ohms)	Quad Choke (per winding)		V <sub>P</sub> (Vrms)	Schematic
							R <sub>CU</sub> (Ohms)	L		
MMJ-100B-501	25	1:1:1:1	5	50	2.6	2.7	0.30	500μH	1500	B

## Test Conditions:

Polarity and Turns Ratio: ±1%

Inductance: 25mH minimum, line side windings in series @ 10kHz, 100mV

Leakage Inductance: Line side windings in series, IC side windings short circuited - measurement @ 100kHz, 100mV

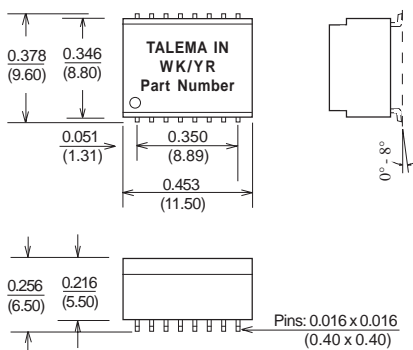
Coupling capacitance: IC side windings in series to Line side windings in series @ 10kHz, 100mV

Common Mode Choke Inductance: 100kHz, 20mV

Test Voltage: 1.5kV for 2 Sec. - Line side windings in series to IC side windings in series

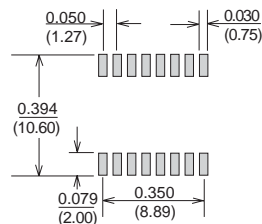
**Standard Packaging:** Tape and Reel

## MMJ Miniature Module

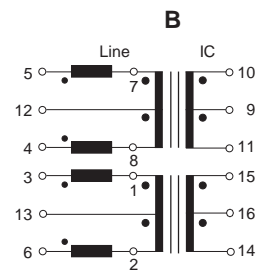


Surface Coplanarity will be 0.004 (0.10)

## Suggested Pad Layout



## Schematic



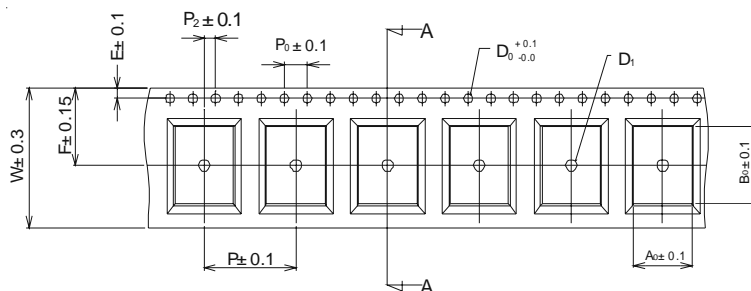
Dimensions: Inches (Millimeters)

Tolerance: ±0.010 (0.25) unless specified otherwise



## Packing and Dimensions

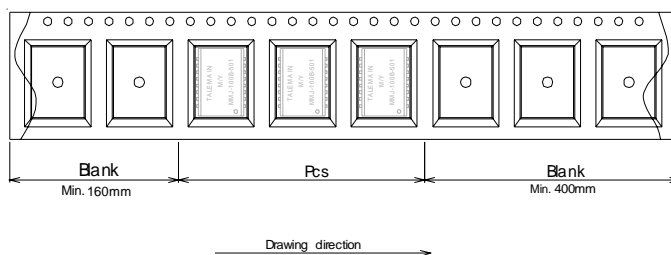
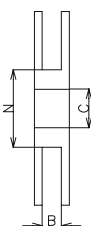
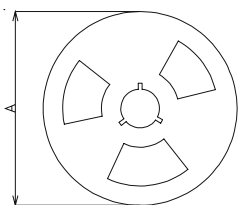
### Dimensions for carrier tape (Unit : mm)



Dimensions are in mm

Type	Dimensions in mm												Reel Size	Quantity (Pcs/Reel)	Quantity (Reel/Cased)
	W	F	E	P <sub>2</sub>	P <sub>0</sub>	D <sub>0</sub>	D <sub>1</sub>	P	A <sub>0</sub>	B <sub>0</sub>	T	K <sub>0</sub>			
MMJ	24.00	11.50	1.75	2.00	4.00	Ø1.5	Ø1.50	16.00	10.20	12.05	0.35	7.05	330x24	600	5/3000

### Reel dimensions



Reel Dimensions in mm				
Type	A	B	C	N
330 x 24	330	24	20.2	100

### Outer Carton

#### Inner Carton

